

• CONTENTS •



Unit 1	Whole Numbers	
	Basic Test A	4
	Advanced Test B	9
Unit 2	Multiplication And Division Of Whole Numbers	
	Basic Test A	16
	Advanced Test B	22
Unit 3	Tables And Line Graphs	
	Basic Test A	29
	Advanced Test B	36
Unit 4	Fractions	
	Basic Test A	44
	Advanced Test B	49
Unit 5	Angles	
	Basic Test A	55
	Advanced Test B	60
Unit 6	Perpendicular And Parallel Lines	
	Basic Test A	66
	Advanced Test B	70
Unit 7	Squares And Rectangles	
	Basic Test A	78
	Advanced Test B	83

Unit 8	Decimals	
	Basic Test A	89
	Advanced Test B	94
Unit 9	The Four Operations Of Decimals	
	Basic Test A	100
	Advanced Test B	105
Unit 10	Time	
	Basic Test A	112
	Advanced Test B	117
Unit 11	Area And Perimeter	
	Basic Test A	124
	Advanced Test B	131
Unit 12	Symmetry	
	Basic Test A	138
	Advanced Test B	142
Unit 13	Tessellations	
	Basic Test A	146
	Advanced Test B	148
	Answer Key & Detailed Solutions	151 ~ 175
	Parents Workshop Support	176

Get the results you want!

TEST A

30 min



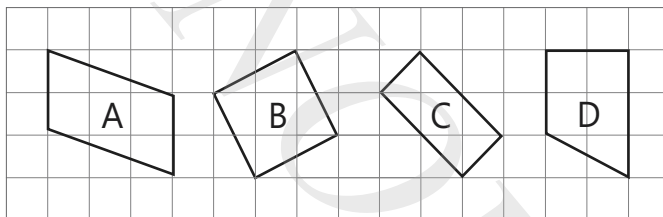
Basic Test A	30
Advanced Test B	40
Total	70

7 SQUARES AND RECTANGLES (BASIC)

Section A (5 x 2 marks)

Choose the correct answer for each question and write its number in the bracket provided.

1. Which figure below has 4 equal sides and 4 right angles?

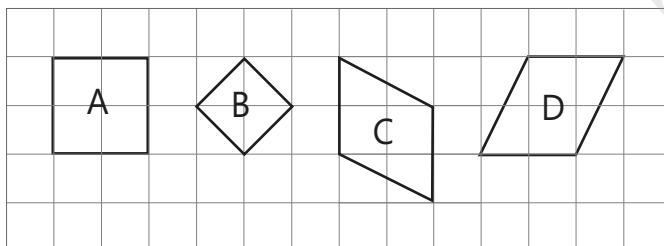


- (1) A
(3) C

- (2) B
(4) D

()

2. Which of the following figures are squares?

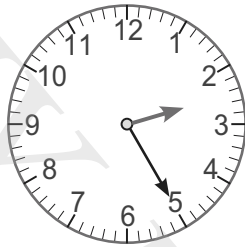


- (1) A only
(3) A and B only

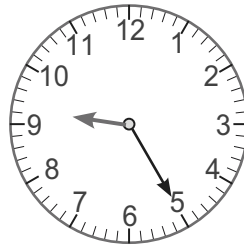
- (2) B only
(4) A, B and D only

()

The clocks below show the time difference in Singapore and London.
Answer questions 9 and 10.



02 25
London



09 25
Singapore



9. When it is 11 00 in London, what time is it in Singapore?

10. When it is 23 45 in Singapore, what time is it in London?

15. Straws are used to make the figures as shown below.



Figure 1

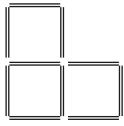


Figure 2

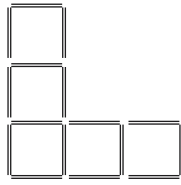


Figure 3

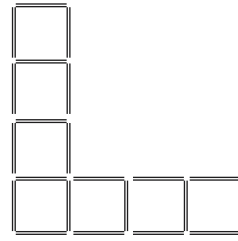


Figure 4

a) How many straws are used to make Figure 5?

b) How many straws are used to make Figure 12?

c) Which figure requires the use of 118 straws?